



Dear Members,

It's been wonderful to see visitors this season, fully experiencing Maryhill — inside and out. From exploring the galleries to exploring outdoors, picnicking in the sculpture collection, discovering three stunning vista overlooks (Sandy and Helen Thomson Overlook; Windy Flats Viewpoint and the Lewis & Clark Overlook) and simply taking in the magic on the grounds at Maryhill!



After the turmoil of the past 18 months, a degree of normalcy seems to be on the horizon. We are grateful we were able to remain open for our entire season. And while there still appears to be some trepidation around travel (especially among our group tours), our attendance numbers are slowly rebounding. It will be some time before tourism returns to pre-pandemic levels, but these small gains leave me optimistic that we will get there eventually. In the meantime, we are busy making plans for next season and have some wonderful exhibitions and programs in the works.

The highlight of our 2022 special exhibitions is an expansive survey of Indigenous contemporary art of the last four decades. Most of the works on view will be drawn from Maryhill's holdings and are emblematic of our commitment to collecting work by Indigenous artists. This show will be complemented by an exhibition featuring silver and turquoise jewelry by Diné (Navajo) and Pueblo artists. We will also display three different sets in the *Théâtre de la Mode* gallery. I am particularly looking forward to the exhibition *Ornithology: Avian Imagery from the Permanent Collection*, as I have always had a deep and personal fascination with birds of all kinds. See pages 3-5 for details about these and exhibitions in the M.J. Murdock Charitable Trust Education Center.

We are optimistic we will be able to bring back a few favorite programs that were postponed during the pandemic, including *Starry Night at the Museum*, which we hope to hold in June 2022. Plans are also underway to reprise *The Exquisite Gorge Project*, with fiber arts as the thread bringing together 13 artists to work in communities along the Columbia River. See page 6 for details on this collaborative art project.

Finally, I would like to extend a heartfelt thank you to you, our members and friends. Your unwavering support — from attending online programs to visiting in person, engaging with us on social media, and making gifts beyond your annual membership dues — has buoyed the museum and our staff, who are working tirelessly during these difficult times.

Warmly,

Colleen Schafroth
Executive Director

P.S. You may have heard that Stonehenge Memorial was recently added to the National Register of Historic Places. Stonehenge is treasured by many Northwest residents and it's gratifying to know that it is now formally recognized as a significant historic site. Read more about Stonehenge conservation on page 8.

On the cover:

Detail from Louis Touchagues "La Rue de la Paix en la Place Vendôme," which will go on view in March 2022.



Shonto Begay (Diné [Navajo], b. 1954), *Taking Flight*, c. 2016, acrylic on canvas, 12" x 36"; Museum purchase with funds provided by an anonymous donor, 2017.34.1

Northwest/Southwest: Indigenous Art After 1980

March 15 – November 15, 2022

Since 2010, Maryhill Museum's collection of contemporary Indigenous art has greatly expanded. The museum is now home to more than 60 works by regional artists that include Rick Bartow (Wiyot), Lillian Pitt (Warm Springs/Wasco/Yakama), and Joe Feddersen (Okanagan and Arrow Lakes). Diné (Navajo) artists Shonto Begay, Marwin Begaye, and Will Wilson are also represented in the collection, as are Cara Romero (Chemehuevi) and Merlin Little Thunder (Southern Cheyenne). "Northwest/Southwest" draws on this work and select loans from public and private collections to present an overview of some of the diverse expressions that have been produced in the Indigenous community during the last four decades.



Pat Courtney Gold (Wasco/Tlingit, b. 1939), *Sally's Hidden Secret*, 1999, cotton and chenille yarn, beads and denim rim, 6" x 5"; Museum purchase with funds provided by Wildhorse Casino and Resort, 2017.7.3

Ornithology: Avian Imagery from the Permanent Collection

March 15 – November 15, 2022

Ornithology is the scientific field dedicated to the study of birds. Birds are also a popular subject for artists — especially printmakers. In 2022, the museum’s Maryhill Favorites Gallery is dedicated to works on paper showcasing avian subjects. Featured artists include Katja Oxman, Betty LaDuke, Arthur Higgins, and Dyann Alkire.

Navajo and Pueblo Jewelry: Silver, Turquoise, Coral, and Shell

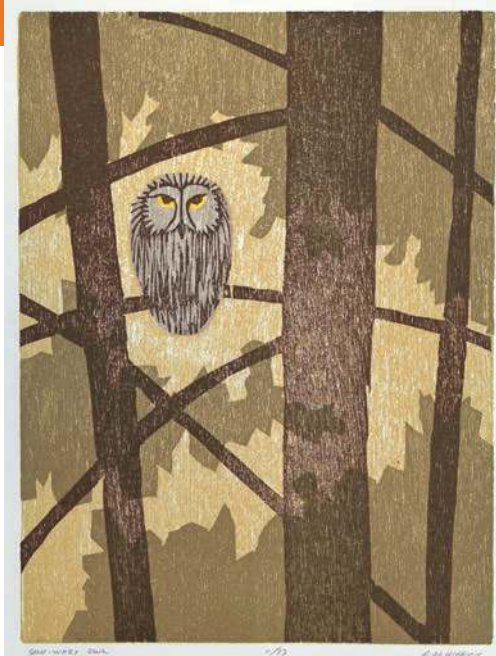
March 15 – November 15, 2022

Turquoise has been known for centuries in Egypt, Mesopotamia, the Indus Valley, and throughout the ancient world. In the Western Hemisphere, the Aztecs utilized quantities of it, and, in the American Southwest, Indigenous peoples have worked with turquoise for more than a millennium. During the last quarter of the 19th century, Diné (Navajo) and Pueblo artists began creating jewelry combining turquoise stones with silver settings — work that is now synonymous with Southwestern artistic expression. Maryhill’s 2022 exhibition of silver and turquoise jewelry features late 20th-century examples drawn from private collections.

Théâtre de la Mode

March 15 – November 15, 2022

In 2022, all or part of three different sets will rotate onto view: Louis Touchagues’ “La Rue de la Paix en la Place Vendôme”; Georges Douking’s “L’Île de la Cité”; and a portion of Christian Bérard’s “Le Théâtre.”



Arthur W. Higgins (American, 1942-2011), *Saw-Whet Owl*, c. 1978, ink on paper, 14" x 11"; Gift of the Seniors of Mosier Valley, Collection of Maryhill Museum of Art, 2012.13.1



Théâtre de la Mode: “L’Île de la Cité,” original 1946 fashions and mannequins in décor by Georges Douking (recreated by Anne Surgers); Gift of Chambre Syndicale de la Couture Parisienne and Paul Verdier, Collection of Maryhill Museum of Art

Exhibitions in the M.J. Murdock Charitable Trust Education Center

Teachers as Artists: Examine, Emerge, Enlighten

March 15 – April 24, 2022

As art educators create new ways to deliver arts education, both students and educators alike have been inspired to re-examine methods of engagement. This year *Teachers as Artists* celebrates the talent of art educators from both Washington and Oregon who have persevered and, yes, even flourished during the pandemic. *Our partners are the Washington Art Education Association and the Oregon Art Education Association.*

The Power of Realism: Stories from the Soul

May 6 – June 24, 2022

Students of Juliette Aristides Atelier at Gage Academy explore visual realism with powerful narratives, juried by Dr. Leo Mazow, Ph.D. from the Virginia Museum of Fine Arts. Dr. Mazow, a thought leader in his field, is the recipient of the prestigious 2013 Eldredge Prize for Distinguished Scholarship in American Art.

Illustrating the Natural World of the Pacific Northwest

July 1 – July 25, 2022

Biological illustration helps develop an intimate understanding of our natural world while conveying an emotional, aesthetic response to what we see. Students and teachers from the Gage Academy of Art in Seattle share their process and artwork.

Pacific Northwest Plein Air in the Columbia River Gorge

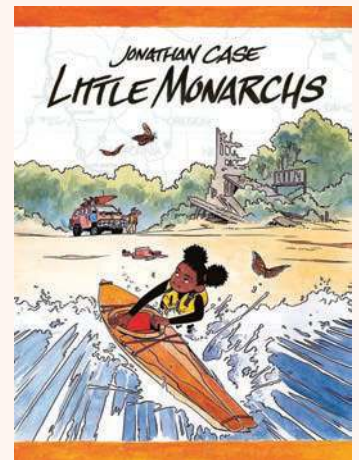
July 31 – August 27, 2022

Paintings created en plein air, capturing the splendor of the Columbia River Gorge during a four-day paint out.

Little Monarchs: A Story for All Ages

September 3 – October 7, 2022

Little Monarchs, by Northwest cartoonist Jonathan Case, is a comic book with a big story about the monarch butterfly and its importance to our environmental health. This exhibition features 35 original artworks from the book.



Exquisitely Connected

October 12 – November 15, 2022

Artist Molly Gaston Johnson continues to connect people from around the country with this “exquisite corpse” activity in art-making. Artists created work in response to the world of today, with each piece connecting directly to those on either side. *Funded in part by a grant from IMLS, American Rescue Plan Grant Program.*

The Exquisite Gorge Project II: Fiber Arts

Similar to the first Exquisite Gorge Project that debuted in 2019, **The Exquisite Gorge Project II: Fiber Arts** is underway, with 13 regional fiber artists working with communities along 220 miles of the Columbia River from the Willamette Confluence in Portland to the Snake River Confluence near Walla Walla, Washington.

Artists will draw inspiration from the people, the landscape and the river, to design an original fiber-based artwork in collaboration with the local community. Each artist has been paired with a Community Partner and will interact with residents from their assigned stretch of the river to create unique installations, sculpture, and innovative designs attached to that specific site. They will also engage in programs meant to inspire and educate the public about fiber arts, and encourage the public to visit each location.

A culminating event is planned for Saturday, August 6, 2022 when each section of the finished piece will be brought together to reveal the continuous artwork — a 66-foot flowing sculpture with the Columbia River as a central element. This Festival of Fiber Arts will feature sheep shearing, artist demonstrations and hands-on activities for visitors of all ages.

“The Columbia River weaves lives together in the most amazing ways,” says Louise Palermo, Maryhill’s Curator of Education and founder of the Exquisite Gorge Project. “This project brings artists and communities together to explore their experiences and stories of living along the Columbia River. We are excited to have an incredibly talented group of fiber artists who will bring creativity and their unique vision to the project.”

Louise Palermo, Maryhill’s Curator of Education is the Project Director and Oregon-based artist Tammy Jo Wilson is the project’s Artistic Director. Participating artists work in a variety of textile and fiber-based media, from weaving, basketry, and repurposed textiles to quilt making, jewelry and felt making.

COMMUNITY PARTNERS & ARTISTS

The following partners and artists will be paired on each section of the river:

Section One: *Oregon Society of Artists — Artist: Lynn Deal*

Section Two: *Lewis and Clark University — Artist: Amanda Triplett*

Section Three: *Columbia Center for the Arts, The History Museum of Hood River County and Arts in Education of the Gorge — Artist: Chloë Hight*

Section Four: *White Salmon Arts Council and Fort Vancouver Regional Library — Artist: Xavier Griffith*

Section Five: *The Dalles Arts Center and The Dalles-Wasco County Library — Artists: Francisco and Laura Bautista*

Section Six: *The Fort Vancouver Regional Library at Goldendale Community Library — Artist: Carolyn Hazel Drake*

Section Seven: *The American-Romanian Cultural Society and Maryhill Museum of Art — Artist: Magda Nica*

Section Eight: *Desert Fiber Arts — Artist: Ophir El-Boher*

Section Nine: *The Confederated Tribes of the Umatilla Indian Reservation — Artist: Jessica Lavadour*

Section Ten: *ArtWalla — Artist: Kristy Kún*

SPONSORS

Major Support from: Roundhouse Foundation; Umpqua Bank Charitable Foundation's Community Grants; The Salvador Fund of the Gorge Community Foundation; Umpqua Bank, Goldendale Branch; and, Columbia Fiber Arts Guild.

This project could not happen without the additional support of services and goods from a number of people and organizations, including the following: Anonymous, M & P Ranch, Premier Metal, Olympic Yarn and Fiber and StoryGorge. Additional thanks go to all our community partners and artists.

INFORMATION

Learn more about *The Exquisite Gorge Project II* and participating artists, as well as upcoming public programs, at maryhillmuseum.org/exquisite-gorge-project-2022



Artist Tammy Jo Wilson, Artistic Director of the Exquisite Gorge Project II: Fiber Arts

SAVE THE DATE

Mark your calendar for these major events in 2022

The Exquisite Gorge Project II: Festival of Fiber Arts

Saturday, August 6, 2022

Join us for an afternoon of textile exploration with live sheep shearing, fiber art demonstrations, and hands-on activities related to the textile arts. Meet The Exquisite Gorge Project participating artists and partner organizations. Fun for all ages. Free on the museum grounds. *Sponsored by M & P Ranch, Goldendale, WA.*

Starry Night at the Museum

**Saturday,
June 25, 2022**

The summer tradition returns! Mark your calendar for a magical overnight campout and stargazing on the grounds at Maryhill.

Featuring volunteers and telescopes from Rose City Astronomers, along with twilight conversations and star-themed storytelling. Campsite reservation information coming soon.

Annual Fundraising Dinner

Saturday, September 10, 2022

Let's gather for a magical roaring '20s-themed evening celebrating Maryhill and to raise funds in support of the museum's exhibitions, programs and ongoing operations. We are hopeful that we will be able to hold this seated fundraising dinner in person at the museum on the plaza. Tickets are \$100 per person. For information on sponsorship, please contact Colleen Schafroth by email at colleen@maryhillmuseum.org or call **509-773-3733 ext. 23.**



Stonehenge Memorial Added to the National Register

Designation will ensure preservation of Stonehenge Memorial for generations to come



Photo by Glenn Siegal

In early 2020 Maryhill engaged Architectural Resources Group (ARG) to complete a conservation assessment of Stonehenge Memorial and to outline their preservation recommendations. As part of this process and to aid future fundraising efforts for conservation, ARG prepared a nomination for Stonehenge Memorial's addition to the National Register of Historic Places.

The National Register records the tangible reminders of the history of the United States and is the official repository for documentation of cultural resources worthy of preservation. In July we received word that Stonehenge Memorial would be added to the National Register. The inclusion of Stonehenge Memorial on the National Register recognizes Sam Hill's singular vision and the enduring significance of the memorial as it relates to local, regional and national history. With this designation, Stonehenge joins the museum building itself, which was placed on the National Register in 1974.

A number of donors made the initial steps of the preservation effort possible, including Architectural Resources Group (ARG), BNSF Foundation, the Hugh and Jane Ferguson Foundation, Kinsman Foundation, Klickitat County Historical Preservation Funds, Jill Moore Lieuallen and Larry and Constance Olson in memory of Ray and Beth Olson.

In the coming months, we will continue to seek grants and other funding opportunities to complete the necessary conservation of the memorial.

You can learn more about Stonehenge Memorial, including the historical research and conservation assessment completed by ARG, in a virtual program recorded earlier this year.

Go to: www.youtube.com/watch?v=71VTMhVoHv4

For information about how to help with the next steps of preserving this important slice of history, contact Colleen Schafroth by email at colleen@maryhillmuseum.org or call **509-773-3733 ext. 23**.

Staff Updates

This fall we bid adieu to Leslie Wetherell, the museum's Operations and Finance Manager, who resigned her position to embark on a new adventure teaching high school math. Leslie was a steady presence at the museum for over 15 years, managing all aspects of the museum's finances and operations with good humor and aplomb. We will miss her, but wish her well as she starts a new career in education.

Aryn Sanderson was hired in September as Operations and Finance Manager. Aryn was born and raised in The Dalles, Oregon. She holds an undergraduate degree in anthropology from Oregon State University and is currently completing a master's degree in museum studies via an online program with City University of New York: School of Professional Studies. Prior to joining the museum, Aryn worked at Griffith Motors for nine years, the last four as office manager responsible for human resources and financials. Her most recent position was registrar at The Dalles Middle School.

In her spare time, Aryn says she enjoys reading — one of her favorites is *The Hobbit* — and likes to crochet, particularly *amigurumi*, which is the Japanese art of knitting or crocheting small, stuffed yarn creatures.



Aryn, with her husband Chris, and their 10-year-old Newfoundland, Dahla, named for the character in Peter Seller's *The Pink Panther*.



Collections

Maryhill's collection of more than 17,000 objects continues to grow through gifts and purchases. The following objects were accessioned into the museum's collection this year; the list is accurate as of October 12, 2021.

R.H. Ives Gammell (American, 1893–1981), *Astarte* (left) and *Agamemnon*, from "Fragments of An Uncompleted Cycle" (Nos. 4 and 17), 1955–1975, oil on panel, approx. 39" x 13" each; Given by the Mairs family in memory of Thomas S. Mairs, Collection of Maryhill Museum of Art

Gifts to the Collection:

Tom Alkire — Ten prints by Dyann Alkire

Bill Avery — Five prints by Indigenous artists Rick Bartow, Shaun Peterson, and Phillip John Charette

Wendi Bilka — Historic photo of Maryhill Museum of Art

Nancy Mairs Daly, Robert Mairs, and Peter Mairs — Paintings by R.H. Ives Gammell and Richard F. Lack; pencil drawing by Thomas Mairs; archival material

Craig Dress — Press photo of former Maryhill Museum of Art director Robert Campbell

Stephen Gjertson — 28 drawings and studies by the artist for his painting, *The Folly of Samson*

Steve and Christina Grafe — Prints by Indigenous artists Joe Feddersen and Andy Everson

Elizabeth Jernberg — Two Romanian fur hats (*căciulă*)

Susan Kovac — Watercolor painting by Percy L. Manser

George Lorance — Gift of three paintings, two by artist Tracy Simpson and one by artist Michael Flohr

Catherine McCusker — Yakama beaded flat bag

The Estate of Germaine Morgan — Makah or Nuu-chah-nulth basket

Samuel E. Siegel — Samson head study for Stephen Gjertson's *The Folly of Samson*

Troutdale Historical Society — Historic photograph and film negative showing Maryhill Museum of Art

Charlotte Van Zant-King — Kinetic sculpture and etching by Arthur Higgins; Paiute beaded bottle; Crow beaded woman's belt

Museum Purchase:

Funds provided by Steve and Christina Grafe — Print by Erik Sandgren

Funds provided by Byron and Sue Henry — Three prints from Cara Romero's "First American Girl" series

Funds provided by Stephen and Laura Muehleck — Three prints by Craig George (Diné [Navajo])

Museum purchase — Painting by R.H. Ives Gammell with Funds from the R.H. Ives Gammell Fund

Museum purchase — Five landscape paintings produced during 2021 Pacific Northwest Plein Air in the Columbia River Gorge

Support in 2021

Maryhill Museum of Art acknowledges the following who have supported the museum's endowment, exhibitions, programs, and special projects through gifts of money, non-cash or by being a member. The museum is grateful to all of its supporters. You make a difference. **Thank you.**

We have made every effort to ensure the accuracy of this list as of November 15, 2021. If there is a mistake, please accept our sincere apologies and contact us so we may correct.

Gifts in 2021

(through Nov 15, 2021)

\$90,000 and Above

Bruce and Mary Stevenson Foundation

\$10,000 to \$30,000

Connie and Jack Bloxom
Evona Brim
Cathy and Bill Dickson
IMLS American Rescue Plan Grants Program
M.J. Murdock Charitable Trust
Juanita and David Neitling
Janie Plath
Roundhouse Foundation

\$5,000 to \$9,999

Barbara and Bob Bailey
Sandra and Dr. William Bennett
BNSF Railway Foundation
Linne and Ron Dodge
Sue Ann and Jim Foster
The Swigert Warren Foundation
Sue and Byron Henry
Horst and Graben Wealth Management
Judith Carlson Kelley
Mary Saylor

\$1,000 to \$4,999

Best Western Hood River Inn
Patty Burnett
Laura and John Cheney
Audrey Crader
David R. Picerne Charitable Foundation
Cheri and Ian Grabenhorst
Penney and Lee Hoodenpyle
Norm Johnson
Saundra and Ned Kice
Dennis R. Love
Kathleen L. Marquart
Maryhill Winery
Brian McClure
Barbara and Rob McCormick
Char and Jim McCreight
Penny Guest and Jim McGlinn
Elaine and Allen Miller
Kathy and Bob Moco
Karel and Edward Moersfelder
Judith A. Lackstrom and Robert E. Morrow
Laura and Steve Muehleck
Dean Ozuna
Susan and Paul Pennington
Red Electric Foundation
The Salvador Fund of the Gorge
Community Foundation

Juris and JoDean Sarins
Colleen and Steve Schafroth
Dean Schlenker
Robert Schommer
Robert Staver
Dr. Philip Swartz
Beverly Terry
Sheri and Jeff Tonn
Sharon and Corday Trick
Umpqua Bank Charitable Foundation,
Community Grants
Melinda and Lee Weinstein
Weinstein PR
Windy Flats Partners LLC — Cannon Power

Up to \$1,000

Donald and Janet Adams
Amy Adams
Susan and James Aigner
Carol and Richard Allen
Ginny and Bill Allen
Sue Allen
Amazon Smile Foundation
Vonda Chandler and Mike Anderson
Kathleen Ash-Milby
Anne Avery
Jan Bahr
Shirley and Ken Bailey
Adele Barnett
Gwyn Bateman
John Baule
Susan Baxter
Bonnie and Jim Beeks
Cyndie and Thom Bell
Jerrine and Jim Belshe
Andrew Benson
Erica Waller and Dave Bernert
Alberta Binns
John and Suzanne Bishop
Roxanne and Benjiman Bisland
Jolene and Nathan Black
Patricia Blakely
Eva Bloch
Suzanne Krol Boller & Dan Boller
Lesley Bombardier
Nancy and Harrison Bowlds
Jean Boyd-Wylie
Keri Bradberry
Kelley Brand
Betty Lavis and Charles Brasher
Joanne Brewer
Anne and Andrew Briggs
Courtney Brod
Squire Broel
Brenda Brook
Dorothy Brown

Molly and Gary Brown
Rachel Buccia
Sally and David Bunnell
B. Bernard and B. Burbach
Jill and Eric Burnette
National Charter Bus
Elise Gittleman and Peter Bushnell
JoRene Byers
Tonya Calder
Darcy Cameron
Diana Candida
Christy and Gordon Canzler
Arvilla and Tom Carney
Paul L. Cary
Alivia Cetas
Teresa and Michael Chabbert
Eric Chen
Tia Christina
Dewanda and Ron Clark
Patricia Cleavenger
Sue Zimet and Alan Cochran
Shanlenn and Justin Colby
Lorna and Jon Cole
Rebecca Collett
Cynthia and Bruce Coolahan
Scott A. Coryell
Patricia and Louis Cosner
Deborah and Patrick Cramer
Lorrie and Lloyd DeKay
Martha Denham
Sharon and Steve Dillard
Tarik and Batool Dillsi
Tina and Ray Dippert
Toni Doane
Linda Doherty
Michael Doliveira
Anne Donning
Sheila Dooley
Alexandra Dorca
Susan and Patrick Dunn
Cylene and Anthony Dunne
Sue and Fred Duthweiler
Erich Ebel
Kathleen Edeline
Vickie Ellett
Cameron Elliott
Mia Ellis
Eric and Melanie Elnes
Sandra Ericson
Barbara and Tim Erion
Mimi Falcon
Lydia Villphas and Madeleine Farmer
Joely Nye-Felt and Thatcher Felt
Susan Ferris
Eileen J. Filler
Marilynn Fletcher

Mary and Scott Frangos
Kristin Freeman
Inez Freeman
Beth and Bill Froman
Leith Gaines
Michael and Catherine Gambee
Gloria Gardiner
Julia and Donald Gerber
Lorraine and Timothy Goddard
Janet Goldstein
Karene Gottfried
Kirsten and Brett Grace
Gayle Bronson Gray
Penny and Al Greenwood
Joseph Gretsich
Helen Lafferty and Mark Gunning
Melanie and Patrick Gurley
Sandy Haechrel
Judy Mathies and William Hale
Martha and William Hall
Mr. and Mrs. Frank Hamill
Dawn and Colin Hart
Kristen Haslebacher
Cason Heard
Ms. Joan Henricks
Carol and Timothy Henry
Jim Hermanson
Mary Jo Hessel
Gayle and Michael Holm
Jerri and Jim Honeyford
Kay and Steve Hoodenpyle
James Hoover
Wesley Howell
Carolyn and Brandon Huber
Betsi and Jeffrey Hummer
Amy Hunt
Elizabeth Ives Hunter
Shannon Hyland
Benevity, Inc.
Harriet Isom
Jeffrey Jaech
Theresa and Norman James
Genesee and Caleb Jayasuriya
Dawn Jensen-Nobile
Linda Johnson
Maye Johnson
Dawn Odell and Matt Johnston
Alice Jones
Stephanie Head and Ray Jones
Karen L. Jones
Dr. Frederick Judy
Whitney and Allen Kabanuk
Alison Kinley
Tom Kinter
Jeanette Kloos
Susan and Bryan Knack

June and Marvin Knudson
 Moon Kong
 Kim Kovalik
 Patricia Krier and Tom Connolly
 Hilly Kravitz
 Wade Fickler and Brian Kurth
 Elizabeth and David Lambert
 Tom Bingman and Sean Lane
 Luise Langheinrich
 Kimberly and Michael Lawler
 Nancy Leahy
 Patricia and Aleks Legan
 Jill Moore Lieuallen
 Rick and Linda Linneweh
 Ian Lis
 Webdirexion LLC
 Glenn and Christine Lucero
 Natalia Luera
 Cheryl L. Lundgren
 Michelle and William Madlinger
 Susan Mall
 James Marston
 Gay and Rex Maurer
 Margaret Maxwell
 Jeanney McArthur
 Kate Bertash and Jarrod McClean
 Lorraine McCurdy
 Cal McDermid
 Char and Kim McGinnis
 Jean McKinney
 Christine McNamara
 Richard E. Meade
 Sorcha Meek
 Jenny and Rogers Miles
 Marsha and Vern Miller
 Karla Wenzel and Fred Miller
 Lois and Lee Miner
 Irene Mitchell
 Irene R. Moen
 Michelle and Matthew Moersfelder
 Mary and Paul Monahan
 Cynthia Marasco and Ryan Mooney
 Mary Opalenik and Al Moreno
 Michael Mullett
 Sarah and Richard Munro
 Ronald Muresan
 Judith Sugg and Anupam Narayan
 Carolyn Nelson
 Rhonda Nielson
 Mary and Steve Nygaard
 Jann Oldenburg
 Roberta and Carlton Olson
 Jeffery Wilson and Seth Olson
 Anita and Gayle Ordway
 Cathy Orfall
 Elaine Cooper O'Toole and James O'Toole
 Joyce and Michael Overeem
 Frank Tim Owen
 Betsy and Michael Panhorst
 Diana Gardener and Judson Parsons
 Lauren Parsons
 Gretchen and John Patrick
 Kay Van Patten
 Carrie Clark-Peck and Dana Peck
 R. Serene Perkins
 Bill Perry and Family
 Lisa Perry
 Laura Peters

Laurel and Brian Pew
 Denise and Gaylord Phillips
 Anna Lukasik and Carl Phillips
 Penelope Phillips
 Tonya and Alex Pieske
 Travel Portland
 Margie and Martin Powell
 Dana Pratt
 Rachel McMillen Pratt
 Jenn and Aaron Pribil
 Carrie and Arthur Price
 Katey Ellen Price
 Louis and Diane Pusillo
 Sandra and Richard Quigley
 Mihaela and Cristian Radu
 Aline Rahm
 Nicole Rainis
 Del Rankin
 Pamela and John Rapach
 Jamie and Vern Read
 Sally Reichmuth
 Maria Reid
 Bonnie and E. Thompson Reynolds
 Mary Lou Richardson
 Margie and David Rikert
 James B. and Marion E. Robbins
 Caroline and Brad Roberts
 Kay Marshall and Alan Root
 Gayle Rothrock
 Janice Morgan and Michael Rowe
 Rica Preda and Justin Ruian
 Tina and Jim Ryan
 Mary and James Scarborough
 Christian and Janet Schlect
 Betty Long-Schleif and Ken Schleif
 Pamela K. Schmid
 Richard Schoen
 Alison Scott
 Julie and James Searcy
 Alliance Francaise De Seattle
 Georgia Seeberger
 Mary and Garry Shane
 Grace Kerschensteiner and Samuel Shroud
 Esther and Doug Siegel
 Judi Simmons
 Joy Singleton
 Shawndra Smialek
 Pam and Frank Smith
 Ken Smith
 Rebecca S. and Scott T. Sonniksen
 Ruth and Jeff Sorensen
 Nancy and Jim Soriano
 Shelby and Dan Sprague
 Paul Steinle
 Paul Carlson and Kathy Strand
 Kristie Strasen
 Michael Stratton
 Janet Ebright and John Sullivan
 Jeanne and Kenneth Tackitt
 Linda and John Tesner
 Karen Thompson
 Diane Thoms
 Carmen and Larry Toll
 Kathleen and Robert Tovey
 Robin M. Tovey
 Sue and Reid Trummel
 Umpqua Bank, Goldendale Branch
 Michael Valentine

John Vergin
 Chandler and Snowzie Vinar
 Diane and Donald Wadsworth
 Jody and James Walker
 Mary Wallace
 Kori Walsh
 Lynn and Brian Wanless
 Ginger, Hannah, and John Weaver
 Ken Weaver
 Jocelyn and Ken Weeks
 Roger S. Wells
 Alan Wernsing
 Leslie and Tadd Wetherell
 Walter Weyler
 Eric White
 Candice Wiege
 Sabine Wild

Sharon and Dwayne Williams
 Patricia Brim-Williams and Chuck Williams
 Jill Wolf
 Vicki and Bruce Wollam
 Wendy Wong
 Carolyn Wood
 Ann Marie and Sam Woolsey
 Lola and Larry Worden
 Allison and Chris Wright
 Carolyn Wright
 Judy P. Yager
 Nancy Yeo
 Alice Coday and Albert Young
 Augustus Young
 Ron Zaremba
 Paul Zoch



2021 GIFTS MADE IN MEMORY OF

The museum was saddened to hear recently about the passing of **Tony Hill**, the great grandson of Samuel Hill and Mona Bell Hill, who loved and supported his grandfather's museum. Gifts were made in his memory by *Brenda Brook, Tonya Calder, Diana Candida, Eric Chen, Michael Doliveira, Marilynn Fletcher, Janet Goldstein, James Hoover, Moon Kong, Ian Lis, Rhonda Nielson, Laura Peters, Louis and Diane Pusillo, Nicole Rainis, Joy Singleton, Shawndra Smialek and Paul Zoch*

Joan Chisholm by *Travel Oregon*

John Denham by *Martha Denham*

Thomas Mullett by *Michael Mullett*

Patricia Perry by *Lisa Perry*

Thora Smith and Muriel Mykland by *Pam and Frank Smith*

Bernadine and Karla Stelljes by *Karene Gottfried*

2021 GIFTS MADE IN HONOR OF

Mary G. Luera by *Natalia Luera*

Laura and Steve Muehleck by *Rick and Linda Linneweh*

Submit Board Nominations Now for the May 2022 Ballot

Board members are a vital to Maryhill Museum of Art, and assist with everything from collections development to marketing, membership, fundraising and visioning the future of the museum.



Can you lend a hand, or do you know of someone who would make a good addition to the leadership team at Maryhill? Museum members in good standing may nominate a candidate, or themselves, to the Board of Trustees. Call **509-773-3733** or email **nominations@maryhillmuseum.org**.

Seasonal On-Site Volunteer

We are seeking a volunteer(s) to assist with grounds and caretaking at Maryhill from April 1 thru November 30, 2022. The position requires 24 hours of volunteer service per week, assisting with grounds maintenance and upkeep, in exchange for the use of a full hookup campsite. Tools and training provided. For more information and a full position description, visit **maryhillmuseum.org**.

*As you are planning your holiday gift-giving, don't forget about Maryhill's Online Museum Store at **maryhillmuseumstore.myshopify.com***



Visiting Maryhill Museum of Art

Maryhill Museum of Art is open daily from 10 a.m. to 5 p.m., March 15 - November 15. Admission is \$12 for adults, \$10 for seniors and \$5 for youth ages 7-18. Children under six receive free admission. Members FREE.

Tickets can be purchased online at maryhillmuseum.org

Non-Profit
Organization
U.S. Postage
PAID
Goldendale, WA
Permit No. 64.

35 Maryhill Museum Dr.
Goldendale, WA 98620
509-773-3733

maryhillmuseum.org

The museum is committed to accessibility for all visitors. For general access information please see the museum's website under Accessibility or call **509-773-3733 ext. 20** or email at **maryhill@maryhillmuseum.org**. For large print programs or sign interpretation, call **509-773-3733 ext. 20** or email **maryhill@maryhillmuseum.org** two weeks prior to the program or event.



#maryhillmuseum